

MINUTES

Meeting: Southern Wiltshire Area Board

Place: Winterslow Village Hall,

Date: 17 November 2022

Start Time: 7.00 pm

Finish Time: 9.10 pm

Please direct any enquiries on these minutes to:

Lisa Alexander (Senior Democratic Services Officer), (Tel): 01722 434560 or (e-mail) lisa.alexander@wiltshire.gov.uk

Papers available on the Council's website at www.wiltshire.gov.uk

In Attendance:

Wiltshire Councillors

Cllr Richard Britton, Cllr Andrew Oliver (Vice-Chairman), Cllr Richard Clewer, Cllr Zoë Clewer, Cllr Ian McLennan and Cllr Rich Rogers (Chairman)

Wiltshire Council Officers

Lisa Alexander, Senior Democratic Services Officer
Parvis Khansari, Corporate Director - Place
Karen Linaker, Partnership and Engagement Manager

Partners

Wiltshire Police – Inspector Tina Osborn
Wiltshire Fire and Rescue Service – Group Manager Jim Weston

Total in attendance: 36

<u>Minute No..</u>	<u>Summary of Issues Discussed and Decision</u>
87	<p><u>Welcome and Introductions</u></p> <p>The Chairman, Cllr Rich Rogers welcomed everyone to the meeting of the Southern Wiltshire Area Board.</p>
88	<p><u>Apologies</u></p> <p>Apologies for absence were received from:</p> <ul style="list-style-type: none"> • Chris Wood - Fire & Rescue
89	<p><u>Minutes</u></p> <p>Decision</p> <p>The minutes of the previous meeting which was opened and adjourned on Thursday 8 September and recommenced on 12 October 2022, were agreed as a correct record and signed by the Chairman.</p>
90	<p><u>Declarations of Interest</u></p> <p>There were none.</p>
91	<p><u>Chairman's Announcements</u></p> <p>Cost of Living Since last Area Board at a full council meeting members across the county affirmed their commitment to offer support to the cost-of-living challenges many will face over the coming months and to focus towards helping residents, businesses, schools and council staff.</p> <p>Already there had been the establishment of the Cost-of-living support hub, providing a one stop resources available, and the creation of an online interactive community directory to help people find the warm spaces and community food providers in the county. Both can be accessed through the council website – supporting you through the rising cost of living.</p> <p>The Chairman was keen for the Board to play a part in supporting its communities and had met to discuss how best to do so. Funds would be made available to support community led initiatives, with applications invited from parish councils, volunteer groups and individuals.</p> <p>Youth Outreach The Board had held another pop-up youth event in Winterslow. There was now a volunteer committee to take on the running of the Youth Zone Thanks were given to Katrina and Sam from Community First for their assistance.</p>

	<p>Underground Studios</p> <p>The Chairman had visited the Underground Studios at the Harnham Bunker, which had previously been awarded funding to support the creative activities, including music, computer coding and 3D printing.</p>
92	<p><u>To note the written reports and updates in the agenda pack or distributed on the night</u></p> <p>The Board noted the written information items, which included:</p> <ul style="list-style-type: none"> • Wiltshire Council Update - Wiltshire Council Grants for Electric Vehicle Chargers • Healthwatch Wiltshire • Integrated Care Board • Current consultations: https://wiltshire.objective.co.uk/portal/ <p>Cllr R Clewer noted that Integrated Care System’s Draft Strategy was being developed and was expected to be circulated in December for public feedback.</p>
93	<p><u>Celebrating Age</u></p> <p>Rebecca Seymour, Creative Producer of the Celebrating Age Programme, gave a presentation on the project, which had been funded by the Area Board in October 2022.</p> <p>With funding awarded by the Area board, Rebecca hoped to bring some creative events and support to the more vulnerable and isolated residents in the Southern Wiltshire community area.</p> <p>A video was shown which detailed some of the work across the county with different projects.</p> <p>A ‘Creative Conversations’ initiative which had begun on the telephone had recently progressed to include working with people who were house bound, to connect them up with support to be creative and build on their wellbeing.</p> <p>A ‘Noticing Nature’ initiative was also available for those with an interest in nature and the outdoors, which would tie in with visual art.</p> <p>Rebecca welcomed the support of the Area Board to guide her to those that were most in need of support.</p> <p>The first planned event would take place in Downton Memorial Hall on 15 December, from 2.00 – 4.00pm.</p>
94	<p><u>Healthy Schools project Update</u></p> <p>The Area Board has helped 7 new primary schools engage with Wiltshire’s</p>

	<p>Healthy Schools Programme. These were, Coombe Bissett, Longford, Old Sarum, St Andrews (Laverstock), St Nicholas (Porton), The New Forest, Winterslow.</p> <p>The project supported health eating, exercise, emotional literacy, mental health support and more.</p> <p>The Board noted the update on the Southern Wiltshire Area Board Healthy Schools Project and presented plaques to the qualifying schools, the New Forest School and St Nicholas School, Porton.</p>
95	<p><u>Cost of Living</u></p> <p>The Board receive an update on Wiltshire’s collective response to the cost-of-living crisis and heard from community led settings that had declared themselves Warm Spaces in the Southern Wiltshire Community Area.</p> <p>Interactive Directory</p> <p>The council has created a new online interactive community directory to help people find the warm spaces and community food providers in the county www.wiltshire.gov.uk/cost-of-living</p> <p>Those who have set up warm spaces or community food provider services were invited to fill out a short survey, so that their details can be included.</p> <p>People were urged to share the directory within their communities, as the resource contained a range of information and guidance on a variety of cost-of-living related topics such as energy, council tax and benefits, housing information, the support of local partner agencies, and advice on mental health.</p> <p>There was also a section dedicated to support and advice for businesses.</p> <p>Warm spaces within the community area</p> <p>Downton library would be providing a warm and friendly space throughout the winter offering energy and cost of living advice, and additional activities</p> <p>The Glebe Hall, Winterbourne Earls, had run a drop in café every other Wednesday afternoon since August 2021 for local residents to meet and chat, providing support to a lot of people who were quite lonely. Cakes and drinks were provided free, with voluntary donations to the Glebe Hall.</p> <p>Alderbury would also open its church hall one day a week and Pitton and Farley would extend the length of time they heat their church after toddlers group for people to make use of a warm space.</p> <p>Woodfalls ran a community café. They would be offering coffee and cake and soup and also an after school offer for parents to visit.</p>

	<p>Downton library would have warm drinks available and the Club Friday in Idmiston would be extending its current offer</p> <p>It was recognised that many clubs may need to recruit more volunteers as a consequence of offering out these facilities for extra periods or days.</p> <p>The Chairman welcomed new ideas for initiatives and urged people to come and engage with the Board.</p> <p>Cllr R Clewer noted how quickly the initiative was evolving, adding that Libraries would also be opening for longer for people to use. The ideas around bringing people together for coffee, were just one way to provide support, acknowledging that people would be motivated to set up what worked best for them.</p> <p>Comments and questions:</p> <ul style="list-style-type: none"> • Whilst warm spaces were needed there were also many people that could not leave their home, who may be feeling alone and cold. How would they be reached? <u>Answer:</u> It takes a lot of volunteer activity – attention was need to the link schemes which could be of use for those not able to leave their homes. • Peter Castle, Pastor in Landford – We are due to discuss the warm space initiative, who should we contact if we need further information? <u>Answer:</u> karen.linaker@wiltshire.gov.uk
96	<p><u>Matters of Community Wide Interest</u></p> <p><u>Parish Councils and Community groups</u> There were no updates at this meeting.</p> <p>Community Policing – local issues and priorities In addition to the written update provided as Supplement 1 to the agenda, Inspector Tina Osborn gave a verbal update, some of the main points included:</p> <p>There had been a successful implementation of a Public Space Protection Order (PSPO) in Downton, aimed to reduce the use of catapults. Since implementation, no further reports had been logged there for that type of offence, during the last two months.</p> <p>There had been reports relating to catapult use in Laverstock and Odstock, however tis was believed to have been by a different group. Pulse Patrols were being carried out in specific areas where issues we are happening. Police would stop and speak to people believed to be connected to the offenses. Ongoing work with partners to try and identify the culprits.</p> <p>During a successful late-night operation carried out in October, one individual had been arrested and sent to prison. As a result of the intelligence collected</p>

through the operation, 2 males had been arrested for a series of burglaries, and had been charged and remanded, awaiting sentence.

There had been three arrests in relation to the theft of high value motor vehicles. These individuals were currently on bail whilst the matter was investigated by CID.

Preventative work included the bike making events, which would continue around the community areas, and increased talks at schools on knife crime.

Comments and questions:

- Cllr Z Clewer – Thanked the Police for their work in Redlynch following a spate of rural crimes. She also urged communities to report all incidents, noted the youth version of Crime Stoppers called Fearless and the recruitment event aimed at school leavers which was due to take place later in the week.
- Cllr R Clewer stated that if there was evidence to support a PSPO for other areas then he supported this.
- Downton PC – There had been recent attendance of a Police Officer to the parish meeting, however that Officer was due to retire. Would he be replaced?

Answer: Recruitment was underway to recruit two more Officers to the Neighbourhood Police Team.

Fire & Rescue

In addition to the written update provided as Supplement 2 to the agenda, Jim Weston, Group Manager introduced himself and provided a verbal update, which included:

- Community Safety Plan link was provided in the report
- Prevention activity – keen to be involved with the warm spaces project and could identify people who need the assistance
- Safe and Well visits continued to be provided, these were free visit to those who were in need to assess the need for safety features at home.
- Expanding the Team with recruitment across the Wiltshire area, to ensure frontline services were robust and strong for communities.
- Experiencing some difficulties due to the recent weather, however the call rate for fires had dropped.
- There had been recent road traffic collisions which had resulted in life changing injuries and a fatality.
- High attendance at the first open day in 15 years, this event included partners attending with many stands to engage with the community

	<ul style="list-style-type: none"> • A recent donation of 3 of the former appliances had been made to Gambia • A new campaign focused on safety measures for the winter period had been launched. <p>Comments and questions included:</p> <ul style="list-style-type: none"> • What constituted a false alarm and how much resource does it use up to attend these? <u>Answer:</u> False alarms do make up a large part of our calls, we work through fire safety side with businesses to drive these down and there were ongoing plans to reduce the calls by working in partnership with agencies. They can be caused by building alarm systems, fumes in premises or a variety of other reasons. We do analyse the reasons to target our work. In addition there were the occasional hoax calls. • How strict was the on-call requirement to need to be able to access the fire station within the time frame set? <u>Answer:</u> Access to the station in previous years was set at a strict 5 minutes, however that time had been stretched to 7.5/8 minutes to ensure the right people were taken on and that appliances were fully manned. One trend identified in target failures was the traffic.
97	<p><u>Community Speedwatch</u></p> <p>The Board received a presentation by Kaylie Griffiths and Sarah Holden, Community Speed Watch Officers, Wiltshire Police on how the Community Speed Watch scheme was working in the Southern Wiltshire Community Area.</p> <p>The presentation slides are attached to these minutes.</p> <p>Some of the points raised were:</p> <ul style="list-style-type: none"> • There were over 1000 volunteers across Wiltshire • Data for the last 2 years showed 5875 first offence letters were sent out, 492 second letters and 129 third letters. • The data collated and input by the CSW volunteers created a Heatmap, which built a bigger picture for communities, both with and without the volunteer groups. • Duty sheets were completed by volunteers • Police were able to make visits to volunteer groups to provide a visual support • Kaylie Griffiths – Community Road Safety Officer had been in post since June, carrying out a range of work and working with other sections of the force. • Recent online drop-in sessions were held, these would be repeated over the course of the year. • Gearing up for the drink drive campaign with 100 new breathalysers available to most of the patrol cars. • 3 new Speed Enforcement Officers joined the team

	<p>Comments and questions:</p> <ul style="list-style-type: none"> • The PCC did recently keep his promise to send Speed Enforcement Officers down to the Ridge in Redlynch where 11 tickets were enforced. • Did the force have a position on the automatic speed devices? <u>Answer:</u> That was a matter for the OPCC. The Police did not endorse one product and we are unable to accept the heatmap data from those devices. • Jim Weston – The Fire Service is involved with partnership work on the Stay Alive initiative. This has Hotspots and data. If you are not linked in with our road safety partnership team, get in touch as we are developing a new model working on data. • Alderbury PC regularly uses the shared device, was there scope for more devices? <u>Answer:</u> That is a matter for the OPCC. They were currently carrying out research to establish how active teams were. That may enable them to take a decision on whether to invest in more equipment. • Winterslow had previously set up traffic surveys at various places, prior to the pandemic. One road met the threshold for speed watch. Nothing had happened since, who would take that up? <u>Answer:</u> The data needs to be less than 2 years old
98	<p><u>Area Board Work Plan Update</u></p> <p>Karen Linaker, Strategic Engagement & Partnership Manager (SEPM) provided an update to the Board.</p> <p>Addressing environmental issues – Cllr Andy Oliver</p> <ul style="list-style-type: none"> • Working towards an engagement event in 2023 • Looking at how to encourage solar panels into community owned buildings and electrical charging points and green initiatives for schools <p>Youth engagement and rural youth outreach -Cllrs Ian McLennan and Zoe Clewer</p> <ul style="list-style-type: none"> • Rural Youth Outreach Project (RYOP) – year 2 commenced in September • Winterslow Youth Club re-starting with new volunteer team supported by RYOP • Youth Pop Up events in October, November and December

	<ul style="list-style-type: none"> • Streetwatch schemes and PSPO ongoing • 2023 youth employment and volunteering events being planned • 19 May – target date for Youth Employment event • PCC recruitment event this weekend <p>Supporting older people and vulnerable adults health and wellbeing - Cllr Rich Rogers</p> <ul style="list-style-type: none"> • Small area board grant facilitated successful Downton Full of Life event in October to mark International Day of Older Persons • Make A Friend Be A Friend initiative has started in Downton and Redlynch • Silver Salisbury Outreach successfully delivered • Reviewing local data from South Wiltshire Memory Service • 7 warm spaces so far supporting cost of living crisis
99	<p><u>Area Board Funding</u></p> <p>The Board noted two funding requests detailed in the attached report, which had been awarded under the SEPM Delegated Powers process.</p> <p>Decision</p> <p>To note the following funding awards which had been allocated under the SEPM Delegated Decision process:</p> <ol style="list-style-type: none"> 1. Winterslow Youth Club was awarded £200 towards the Tea-Time Po Up Toasties project. 2. Celebrating Age Project was awarded £750 towards the sessions
100	<p><u>Local Highways and Footpath Improvement Group (LHFIG) Update</u></p> <p>The Board noted the report and considered the recommendations for funding arising from the last LHFIG meeting held on 2 November 2022.</p> <p>Cllr R Clewer queried whether a response had been received from Clarendon PM in relation to the extension of the 20mph scheme as detailed in 4b.</p> <p>It was noted that Clarendon PM were supportive of the scheme, but not of the proposal for them to provide some element of financial contribution due to the small nature of the parish and limited funds available</p> <p>The Board discussed the options to award funding pending confirmation of Clarendon’s support for the scheme.</p> <p>Decision</p>

	<p>The Southern Wiltshire Area Board allocated LHFIG funding to the following projects, in line with the LHFIG recommendations with the condition that funding for 4b, only be released once confirmation of support was received by Clarendon PM :</p> <ul style="list-style-type: none"> • 4a – £2022.50 – Petersfinger Road/Milford Mill Road, HGV prevention • 4b – £6228.72 – Extension of 20mph zone Laverstock • 4c – £750 – Porton improved footway/drop kerb works • 4e – £627 – Firs Rd Nameplates • 4f – £2130 – Cholderton, Installation of NAL sockets for SID device • 4i – £432 – Access improvements to FIRS5 • 4m – £3375 – Riverside Rd crossing upgrade
101	<p><u>Close</u></p> <p>Future meeting dates (7-9pm):</p> <ul style="list-style-type: none"> • 23 February 2023 • 25 May 2023 • 7 September 2023 • 7 December 2023 • 22 February 2024 <p>Area Board Funding deadlines are 4 weeks prior to the meeting date. Contact karen.linaker@wiltshire.gov.uk for further information.</p>
<p><u>CSW.Presentation.Slides</u></p>	

WILTSHIRE POLICE



CSW - Southern Wiltshire AB
 17 November 2022
 Winterslow Village Hall







Proud to serve and protect our communities

www.wiltshire.police.uk | [Facebook/wiltshirepolice](https://www.facebook.com/wiltshirepolice) | [Twitter @wiltshirepolice](https://twitter.com/wiltshirepolice) | [LinkedIn/company/wiltshirepolice](https://www.linkedin.com/company/wiltshirepolice)

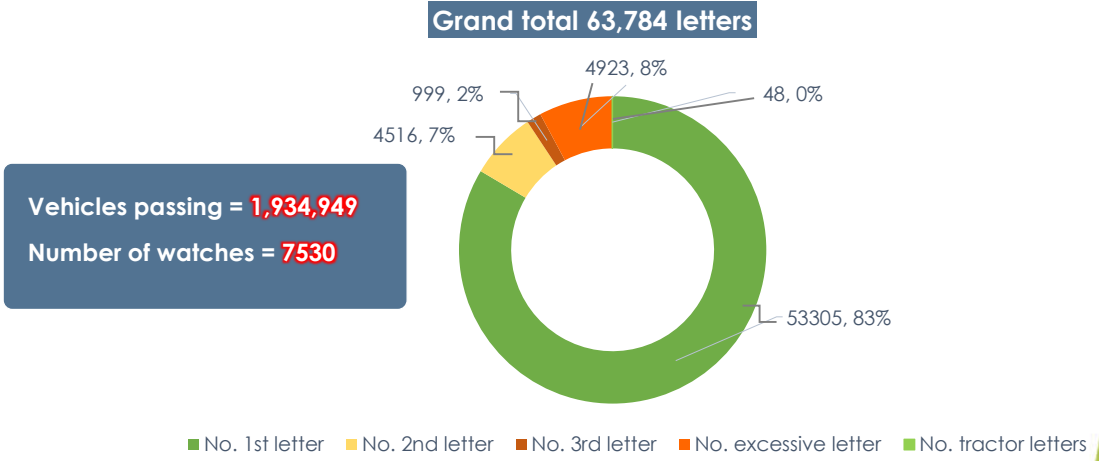
1

Agenda

- 
CSW Overview
 - Data** high level letters
 - Data** by Southern Wiltshire AB
 - Map** powered by Power BI
 - QlikSense** data analytics
 - Tasking** for CPT's
 - Area Boards** reports
 - Area Board** Traffic Surveys
- 
Community Road Safety Officers
 - Role** overview
 - Activities** to date and future
 - Partnership working**
- 
Community Speed Enforcement Officers
 - Who** are they and training
 - Activity** to date
 - Results** to September
- 
Questions
 - Any questions**

2

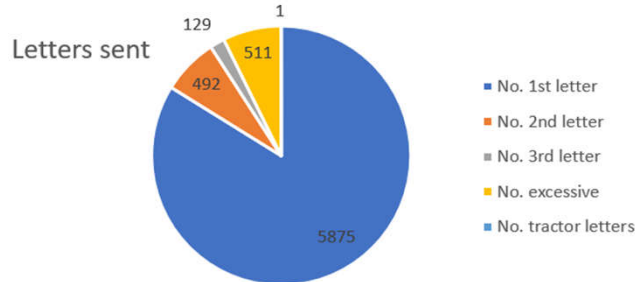
• CSW – Data for last 2 years



3

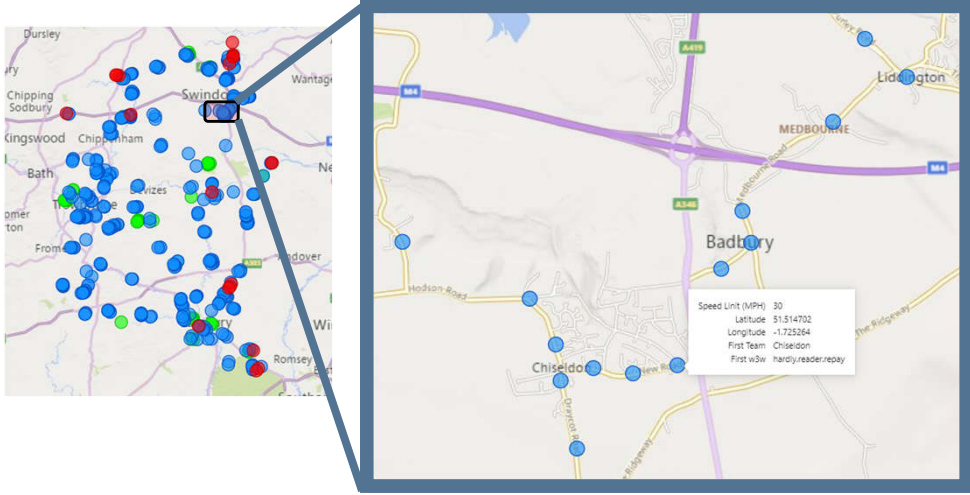
• CSW Southern Wiltshire – Data for last 2 years

Team	Active	No. 1st letter	No. 2nd letter	No. 3rd letter	No. excessive	No. tractor letters	Total letters	No. of watches	Average speeders %
Alderbury	Yes	1086	135	42	88	0	1351	125	9.4%
Allington South/Boscombe	Yes	2855	215	50	138	0	3258	227	4.5%
Coombe Bissett	Yes	1022	83	25	206	1	1337	145	7.3%
Firsdawn	No	13	2	0	0	0	15	4	3.2%
Laverstock Ford	Yet to start	0	0	0	0	0	0	0	0.0%
Odstock	Yes	51	5	3	1	0	60	41	1.3%
Redlynch	Yes	465	30	6	33	0	534	38	6.6%
Whiteparish	Yes	383	22	3	45	0	453	90	3.9%
Total		5875	492	129	511	1	7008	670	5.9%



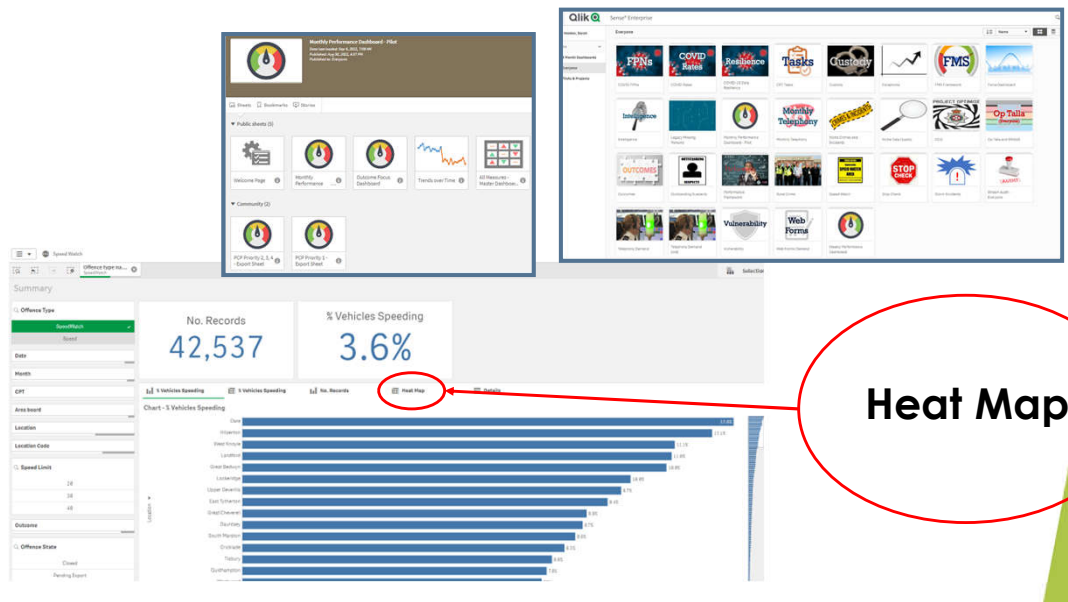
4

• CSW – Map using Microsoft



5

• CSW - Qlik



6

• CSW – QlikSense HeatMaps

Amesbury	-	-	132	563	929	1,166	827	985	249	339	947	913	786	236	61	70	-
Chippenham	-	-	-	1	182	103	43	93	22	76	134	101	340	268	99	3	-
Devises	-	-	-	248	435	259	190	165	116	42	134	258	491	442	94	14	-
RWB	-	-	-	62	195	238	459	305	42	11	492	962	256	154	3	-	-
Salisbury	-	-	7	87	581	387	654	642	491	266	414	932	1,396	1,472	294	63	7
Swindon	6	20	368	371	598	476	1,022	843	857	795	1,415	1,772	2,033	1,293	658	504	169
Trowbridge	-	-	1	44	57	37	300	425	186	73	154	371	463	467	68	1	-
Warminster	-	-	1	15	173	389	201	168	155	197	34	50	131	336	376	107	5

	06:00	07:00	08:00	09:00	10:00	11:00	12:00	13:00	14:00	15:00	16:00	17:00	18:00	19:00	20:00
Amesbury	118	170	17	-	106	213	22	72	95	98	234	51	-	-	-
Allington South & Boscombe	118	170	17	-	106	213	22	72	95	98	234	51	-	-	-
Salisbury	-	13	482	72	25	40	224	101	63	365	758	436	59	18	7
Alderbury	-	13	137	38	3	17	221	96	21	117	233	115	14	-	-
Coombe Bissett	-	-	276	15	-	6	1	1	2	176	405	31	-	-	-
Firsdow	-	-	-	-	-	-	-	-	-	-	1	5	-	-	-
Odstock	-	-	9	3	-	-	-	-	-	4	10	7	-	-	-
Redlynch	-	-	5	3	-	-	-	-	-	25	97	175	45	18	7
Whiteparish	-	-	55	13	22	17	2	4	40	46	12	103	-	-	-

7

• CSW - Tasking

Sarah Holden
 To: Amesbury Area CPT, Chippenham Area CPT, Devises Area CPT, Royal Wootton Bassett Area CPT, Salisbury Area CPT, Swindon Area CPT, Trowbridge Area CPT
 Cc: [Redacted]
 Retention Policy: Inbox 7year (IGB) (7 years)
 Pwesey_AB_10102022.pdf (153 KB)

ROAD SAFETY WEEK 14-20 2022
 SAFE ROADS FOR ALL
 Because everyone's life matters on roads. Find ad mats and get your FITS kit from pack at www.traffic.gov.uk/road-safety-week

DUTY SHEET
 Simplifying Performance & Duty Management

Power BI

Microsoft Lists

Tasking is as follows for the next 2 weeks:

CSW Tasking	
Amesbury	Borton, Midoda Woodford
Chippenham	Barton, East Tytherton
Devises	Easton Royal, Lockeridge
RWB	Cricklade, Eastcourt
Salisbury	Stanhore, Leaverstock Park , Longbarn
Swindon	Loddington
Trowbridge	Bradford on Avon, West Ashton
Warminster	Upper Deverill, Bishopstrow
RPU/SRPU	A338 Borton to Marlborough, A429 / A490 Malmesbury to Cricklade

Don't forget to give us your Area Board dates so that we're able to provide you with and activity report like the one attached, they are proving to be very helpful.

8

• CSW – Area Boards, if we were not here tonight ☺

Wiltshire and Swindon
pcc

CSW overview
Pewsey Area Board
October 2022

Team	Active
Alton	Yes
Beechingsstoke	Yes
Charlton	Yes
East Grafton	Yes
Easton Royal	Yes
Enford	Yes
Froxfield	Yes
Manningford Bruce	Yes
Oare	Yes
Pewsey	Yes
Pitton and Farley	Starting up
Rushall	Yes
Upavon	No
Wilcot	No

Traffic survey results in the last 2 years

Title	Result	Survey start date	Date TS received	Speed limit	85th percentile
All Cannings - Chandlers Lane	NFA	23/01/2022	29/04/2022	20	15.47
All Cannings - The Street	NFA	11/09/2021	05/10/2021	20	21.4
Pewsey - North Street	NFA	14/11/2021	30/11/2021	30	27.7
Pewsey - Vale Road	NFA	02/11/2020	08/12/2020	30	29.3
Shalbourne	CSW	21/11/2021	13/01/2022	20	28.3
Stanton St Bernard	NFA	21/11/2021	13/01/2022	30	25

Rolling 2 year data for CSW activity

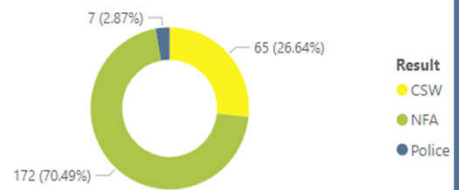
Team	Vehicles Passing	No Of Speeders	1st Letter	2nd Letter	3rd Letter	Excessive Letters	Tractor Letters	Total Letters	No. of Watches	Average Speeders
Alton	6545	301	164	17	3	18	0	202	39	3.8%
Beechingsstoke	3540	48	25	3	1	2	0	31	31	1.1%
Charlton	22486	1777	1267	91	27	85	5	1475	94	7.8%
East Grafton	359	10	9	0	0	0	0	9	2	2.9%
Easton Royal	10706	459	273	26	4	15	0	318	94	3.8%
Enford	47514	1904	1333	120	26	65	0	1544	131	3.7%
Froxfield	7172	270	167	5	1	0	0	173	32	2.5%
Manningford Bruce	1522	48	18	3	0	2	0	23	40	1.9%
Oare	3307	494	308	20	5	43	0	376	22	12.3%
Pewsey	1303	83	55	1	1	1	0	58	11	5.9%
Rushall	5024	238	146	6	0	1	0	153	29	4.3%
Grand Total	109478	5632	3765	292	68	232	5	4362	525	4.5%

9

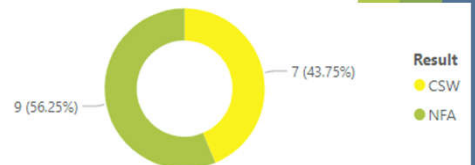
• CSW – Traffic Surveys

Title	Speed 85th		CPT	Area Board
	Result	limit percentile		
Allington - C81 Pewsey Road	NFA	40 42.6	Amesbury	Southern Wiltshire
Collingbourne Ducis - A346 Lidgershall Road	CSW	30 35.9	Amesbury	Southern Wiltshire
Farley	CSW	30 35.7	Salisbury	Southern Wiltshire
Kilmington - New road	NFA	40 44.83	Warminster	Southern Wiltshire
Longhedge - A345	NFA	40 39.1	Salisbury	Southern Wiltshire
Old Sarum - A345 Longhedge	NFA	40 45.5	Salisbury	Southern Wiltshire
Pitton	NFA	30 32.7	Salisbury	Southern Wiltshire
Redlynch	NFA	30 33.03	Salisbury	Southern Wiltshire
Redlynch	CSW	30 35.87	Salisbury	Southern Wiltshire
Redlynch - Grove Lane	CSW	30 35.87	Salisbury	Southern Wiltshire
Redlynch - The Ridge	CSW	30 37.78	Salisbury	Southern Wiltshire
Salisbury - Ford	CSW	30 36.5	Salisbury	Southern Wiltshire
Tisbury - Vicarage Road	NFA	20 23	Warminster	Southern Wiltshire
Winterbourne Gunner - Down Barn Road	NFA	60 40.32	Amesbury	Southern Wiltshire
Woodfalls - B3080 The Ridge	CSW	30 37.78	Salisbury	Southern Wiltshire
Woodfalls - B3080 The Ridge (South of Lodge Grove)	NFA	30 33.03	Salisbury	Southern Wiltshire

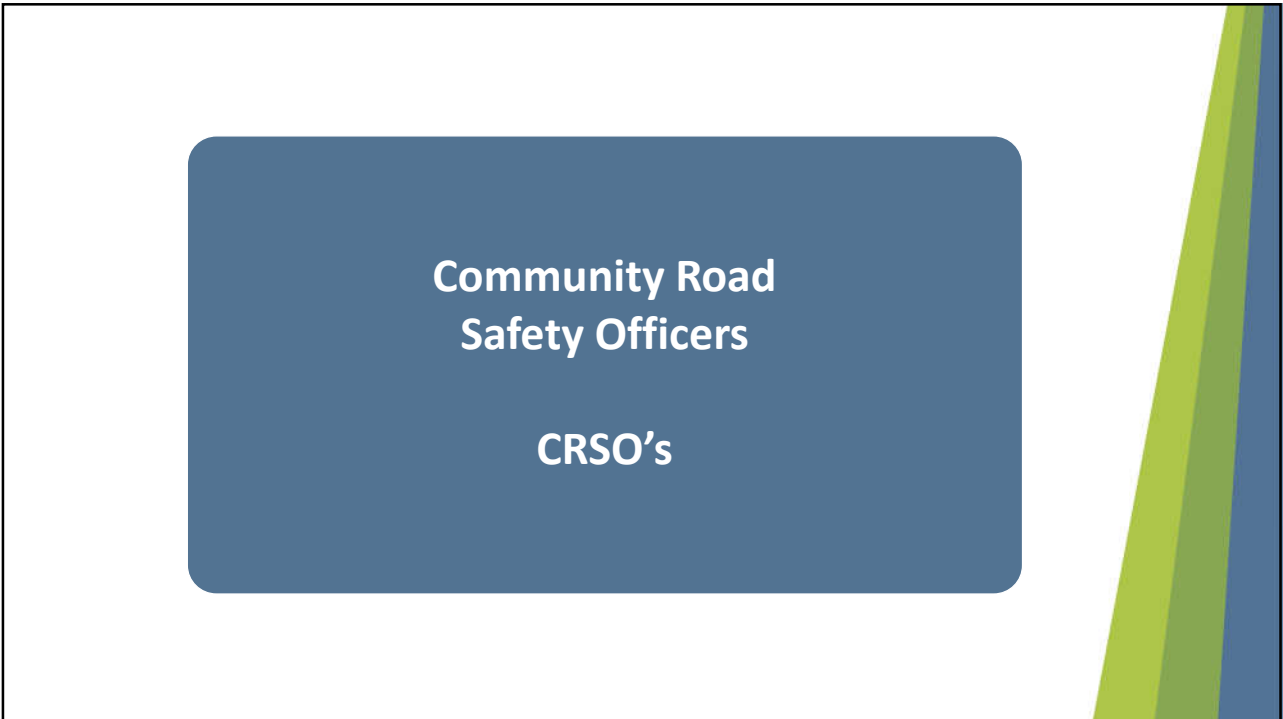
Overall results



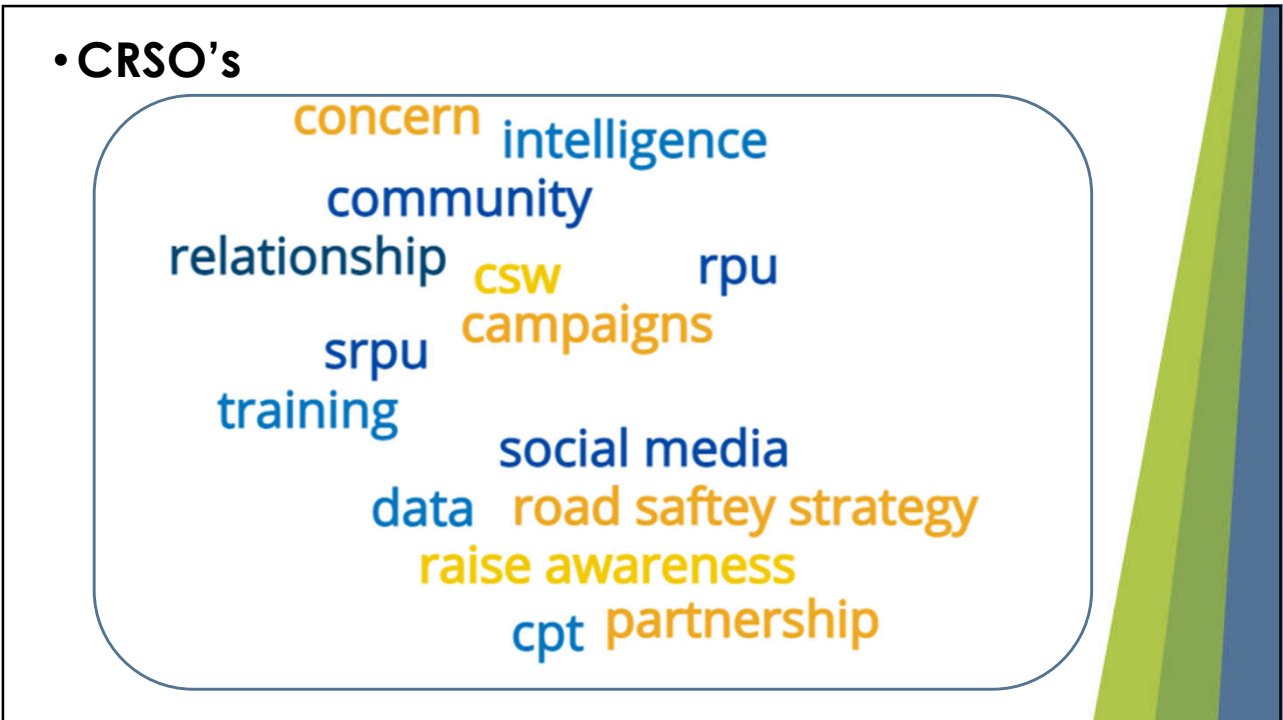
No. TS's by Area Board



10



11



12

•CRSO's

Attended ICE LIVE



Attending



Promoting



Partnership working

Wiltshire Council



**DORSET & WILTSHIRE
FIRE AND RESCUE**

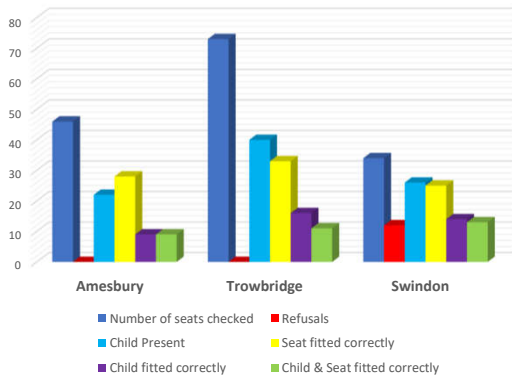


**Wiltshire
Air Ambulance**
funded by you, flying for you

13

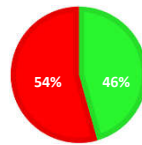
•CRSO's – Child care seat checks

Overview



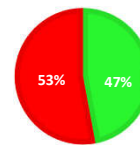
AMESBURY

Nothing to resolve Adjustments necessary



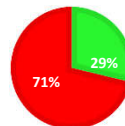
SWINDON

Nothing to resolve Adjustments necessary



TROWBRIDGE

Nothing to resolve Adjustments necessary



Working in partnership with
Wiltshire Council

14

Community Speed Enforcement Officers

CSEO's

15

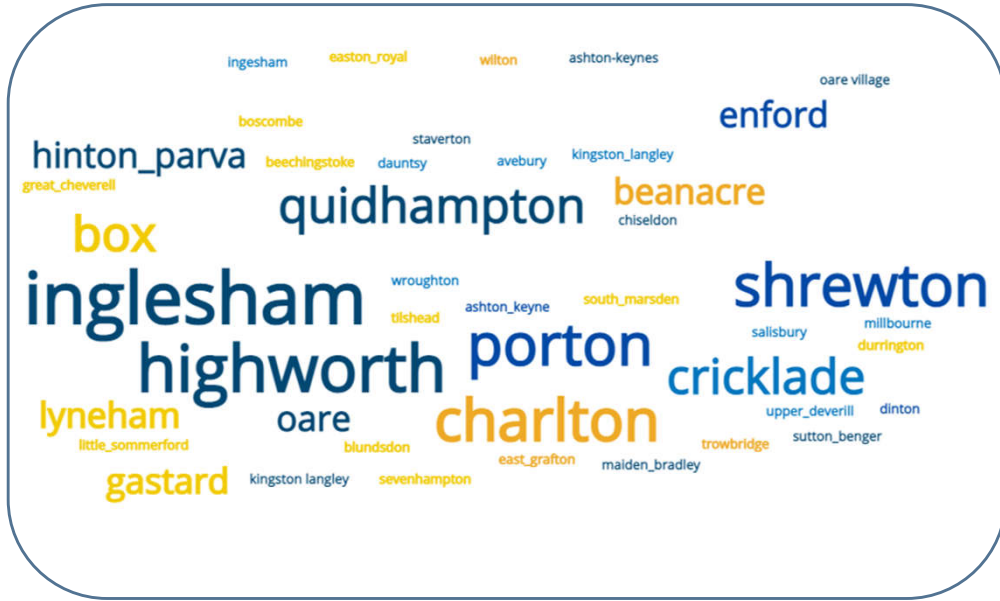
• CSEO's



Debbie, Jack & Scott

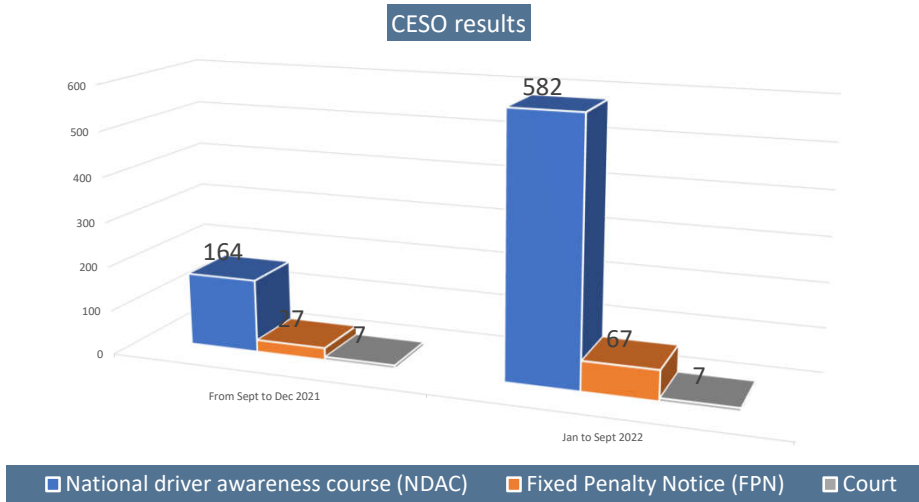
16

• CSEO's - Activity



17

• CSEO - Results



18



19